

MsMU15x-RJ mini multi sensor

Application

The MsMU15x-RJ enable the controllers of the RCC1xx-L, LCC1xx-L, and SCC1xx-L series to control different room parameters such as lighting, sunblind, and fan speed.

This accessory is ideally designed for rectangular rooms, allowing presence detection in a rectangular area of 7 x 5.5 x 2.5m (l x w x h). These values can change according to the multi-sensor position, the detection sensibility and the room architecture.

The MsMU15x-RJ mini multi sensors can be installed into suspended ceilings.



Content	Page
Important Information Regarding Product Safety	2
Overview	3
Features and Benefits.....	3
Item.....	3
Technical Data MsMU15x-RJ	3
Accessories (not included in delivery)	3
Dimensions	4
Mounting	4

Änderungen vorbehalten - Contents subject to change - Sous réserve de modifications - Reservado el derecho a modificación - Wijzigingen voorbehouden - Con riserva di modifichie - Innehåll som skall ändras - Změny vyhrazeny - Zmiany zastrzeżone - Возможны изменения - A változtatások jogát fenntartjuk - 保留未经通知而改动的权力

Important Information Regarding Product Safety

Safety Instructions

This data sheet contains information on installing and commissioning the product "MsMU15x-RJ". Each person who carries out work on this product must have read and understood this data sheet. If you have any questions that are not resolved by this data sheet, you can obtain further information from the supplier or manufacturer.

If the product is not used in accordance with this data sheet, the protection provided will be impaired. Applicable regulations must be observed when installing and using the device. Within the EU, these include regulations regarding occupational safety and accident prevention as well as those from the VDE (Association for Electrical, Electronic & Information Technologies). If the device is used in other countries, it is the responsibility of the system installer or operator to comply with local regulations. Mounting, installation and commissioning work on the devices may only be carried out by qualified technicians. Qualified technicians are persons who are familiar with the described product and who can assess given tasks and recognize possible dangers due to technical training, knowledge and experience as well as knowledge of the appropriate regulations.

Legend



WARNING

Indicates a hazard of medium risk which can result in death or severe bodily injury if it is not avoided.



CAUTION

Indicates a hazard of low risk which can result in minor or medium bodily injury if it is not avoided.



CAUTION

Indicates a hazard of medium risk which can result in material damage or malfunctions if it is not avoided.



NOTE

Indicates additional information that can simplify the work with the product for you.

Notes on Disposal

For disposal, the product is considered waste from electrical and electronic equipment (electronic waste) and must not be disposed of as household waste. Special treatment for specific components may be legally binding or ecologically sensible. The local and currently applicable legislation must be observed.

Overview

This accessory combines, in an extra small device, an infrared receiver, a presence detector, and a light intensity sensor (Lux level).

The multi sensor allows the automatic control of all comfort parameters in a room, depending on the occupancy mode.

It receives orders emitted by users (via a remote control) and transmits them to a lighting, sunblind or HVAC controller.

Features and Benefits

- Small and discreet accessory (visible part: \varnothing 40 x 8 mm)
- Combines several sensing technologies:
 - Receiver: transmits orders emitted by a remote control.
 - Presence detector: detects a person who moves inside the multi-sensor detection area.
 - Light intensity sensor: measures the average Lux level in a room (0 to 1000 Lux) and allows a lighting controller to manage lights.

Item

MsMU15x-RJ mini multi-sensor

Technical Data MsMU15x-RJ

Nominal voltage	■ 5 V, max. 5 mA, supplied by a controller
Ambient temperature	■ +5 °C to +45 °C
Ambient humidity out of operation	■ +20 % to +90 % without condensing
Degree of protection	■ IP20
Housing	■ plastics
Mounting	■ ceiling suspension
Weight	■ 0.14 kg
Dimensions W x H x D	■ 40 x 32 x 32 mm

Accessories (not included in delivery)**Remote Control**

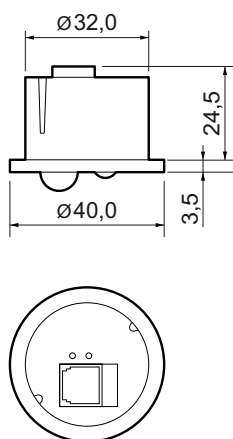
RBW119-IR

Infrared remote control

Wiring for Accessories

Z178-CIAT	Connection line between room control module and room controller (RJ9 plug on both sides; 1,5 m)
Z178	Connection line between room control module and room controller (RJ9 plug on both sides; 10 m)
Z178-15M	Connection line between room control module and room controller (RJ9 plug on both sides; 15 m)
Z178/2	Adapter RJ9 plug - terminal block 4 pole for the connection to a 2 x 2 x 0.8 YST cable

Dimensions



Mounting



CAUTION

Only qualified technicians may install or remove the device.

