

GLT-HW6001N Notebook-GLT**Application**

Notebook for higher-level building management functions, made for use with the GLT-SW4000N or GLT-SW1000N building management software for the Neutrino BMS for connecting controllers, BACnet and LON devices.

To install the notebook with the BMS software, you must carry out the settings described on the following pages during installation of the BMS software.



Content	Page
Activating the Mouse Pad Driver	2
Requirements	2
Procedure	2

Änderungen vorbehalten - Contents subject to change - Sous réserve de modifications - Reservado el derecho a modificación - Wijzigingen voorbehouden - Con riserva di modifichie - Innehåll som skall ändras - Změny vyhrazeny - Zmiany zastrzeżone - Возможны изменения - A változtatások jogát fenntartjuk - 保留未经通知而改动的权力

Activating the Mouse Pad Driver

When installing the BMS software, the graphics card of the notebook is initially configured with the "Vesa" driver. The graphics card can be configured for the "i830" driver only after the BMS has been started. This is necessary to be able to operate the mouse pad of the notebook.



NOTE

When installing the BMS software, you can work with the USB mouse supplied.

Requirements

The notebook is made for use with the GLT-SW4000N or GLT-SW1000N software. The following versions can be installed:

- Neutrino BMS software version 8.31
- Neutrino BMS software version 9.05

Procedure

To install the Neutrino BMS software, proceed as follows:

- ▶ Install the software from the installation DVD. Follow the instructions in the installation program. During installation of the BMS, the graphics driver "Vesa" is set.
- ▶ To complete BMS installation, shut down the operating system and switch off the notebook.
- ▶ Before switching on the notebook again, stick the USB mouse which is supplied separately into a USB slot of the notebook. Make the following settings in the "Tools > Configuration" BMS menu.
- ▶ Select the "Settings > BMS server" menu, and click the "Special hardware settings" button. You will then receive the following configuration dialog:

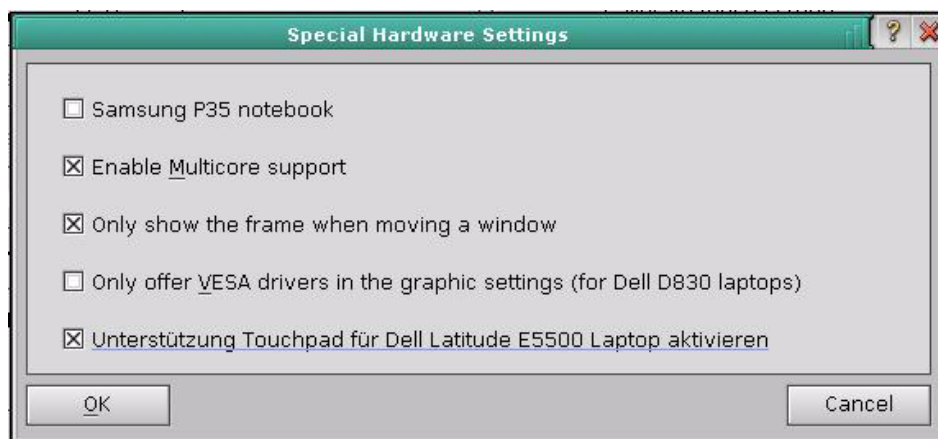


Abb. 1: "Special hardware settings" configuration dialog

- ▶ Select the options as shown in the previous illustration to activate support for the mouse pad of the Dell Latitude E5500 notebook.
- ▶ Save the configuration and restart the BMS.
- ▶ Then make the following settings in the "Tools > Graphic settings" BMS menu:
 - Video driver: "i830"
 - Resolution: "1440 x 900 32 bit"
 - Select: "Disable Hardware Cursor".
- ▶ Restart the BMS.
 - You can now work with the mouse pad of the notebook.